
文件编号：SC200/200E、SC200/200EB-136ZY-C

Doc.No：SC200/200E、SC200/200EB -136ZY-C

SC200/200E、SC200/200EB 施工升降机

SC200/200E、SC200/200EB Construction Hoist

产品样本

Stylebook



中联重科股份有限公司

ZOOMLION HEAVY INDUSTRY SCIENCE AND TECHNOLOGY CO. LTD.

SC200/200E、SC200/200EB 施工升降机

SC200/200E、SC200/200EB Construction Hoist

产品样本

Stylebook

编 制 Editor : 田苗苗

校 对 Proofreader : 刘海华

批 准 Ratifier : 许 辉

日 期 Date: 2017-12-22

1. 配置表

1. Configuration

中联重科“节能型 BWM-3”系列施工升降机 Energy-saving BWM-3 serial construction hoist			
机型 Type 配置 Configuration	经济版 Economic	智能版 Intelligence	精英版 Super
代号 Code	SC200/200E (BWM-3E)	SC200/200E (BWM-3I)	SC200/200EB (BWM-3S)
定义 Designation	高效节能传动系统、 经济版操作台 High-efficiency and energy-saving transmission system, Economic operation table	高效传动、智能版 HLC、智能版操作台、 升降机远程管理系统 High-efficiency transmission system, intelligent HLC and operation table, remote management system	高效传动、智能版 HLC、精 英版操作台、升降机远程管 理系统、变频控制、自动平 层(选配) High-efficiency transmission system, intelligent HLC, super operation table, remote management system, inverter control, automatic landing (option configuration)
配置升级包 configuration upgrade package			
名称 name	描述 description	升级配置 upgrade configuration	
EI 升级包 EI upgrade package	经济版升级到智能版 Economic upgrade to intelligence	增加 HLC、操作台升级、升降机远程管理系统 Add HLC, operation upgrade and remote management system	
IS 升级包 IS upgrade package	智能版升级到精英版 Intelligence upgrade to super	操作台升级、变频控制系统、自动平层 (选配) operation upgrade, inverter control and automatic landing (option configuration)	
ES 升级包 ES upgrade package	经济版升级到精英版 Economic upgrade to super	增加 HLC、操作台升级、变频控制系统、自动平层(选 配)、升降机远程管理系统 Add HLC, operation upgrade, inverter control, automatic landing (option configuration) and remote management system	

参数配置表 parameter configuration			
基本参数 basic parameter			
产品型号 Type	SC200/200E		SC200/200EB
额定载重量 Rated load	2×2000kg		
吊笼尺寸 (长*宽*高) Specification of Cage (length*width*height)	3.2m×1.5m×2.5m		
提升速度 Lifting speed	36m/min		0~40m/min
电机功率 Motor power	2×2×13kw		
减速机速比 Reductor ratio	1:16		
防坠安全器 Safety device	SAJ40-1.2		
标准节尺寸 Size of mast section	650mm×650mm×1508mm		
升降机远程管理系统 remote management system			
设备管理 Equipment management	-	●	●
故障报警 Failure warning	-	●	●
状态查询 Status inquiry	-	●	●
维保管理 Maintenance management	-	●	●
机手管理 Driver management	-	●	●
GPS 定位 GPS location	-	●	●
远程监控	-	●	●

Remote control			
工程管理 Project management	-	●	●
高效传动 High-efficiency transmission system			
高效减速机 High-efficiency reductor	●	●	●
一体式驱动体 Integrated drive	●	●	●
防松背轮 Prevent loosing back wheel	●	●	●
防松滚轮 Prevent loosing idler wheel	●	●	●
吊笼 cage			
230 立柱 230 column	●	●	●
装饰铝板 Decorative Aluminium plate	●	●	●
安全器防护罩 Safety device cover	●	●	●
LED 照明灯 LED lamp	●	●	●
850 天窗(带气动弹簧) 850 skylight (with pneumatic spring)	●	●	●
封闭式滑槽 Closed slide way	●	●	●
司机室 (带推拉窗、钢化玻璃) Cab (with sash window and	●	●	●

stalinite)			
舒适型座椅 Comfortable seat	●	●	●
工具箱 Tool box	●	●	●
智能控制系统 intelligent control system			
一体式电控箱 Integrated electric cabinet	●	●	●
工频 Power frequency	●	●	-
变频 Frequency conversion	-	-	●
工变频转换 Working frequency conversion	-	-	○
HLC	-	智能版 Intelligence	精英版 Super
SIM 卡 SIM card	-	●	●
超载保护器 Overload protection	●	●	●
防粘连功能 Anti-adhesion function	●	●	●
防冲顶限位装置 Prevent running to top device	○	○	●
里程显示 Milage displaying	-	●	●
运行时间显示 Running time	-	●	●

displaying			
电流电压检测 Current and voltage measuring	-	-	●
BWM 操作台 BWM operation table			
BWM 操作台 BWM operation table	经济版 Economic	智能版 Intelligence	精英版 Super
自动平层 Automatic landing	-	-	○
身份认证 (IC 卡) IC card	钥匙 key	●	●
故障诊断 Fault diagnosis	-	●	●
状态提示 Status displaying	-	●	●
楼层显示 Landing displaying	●	●	●
载荷显示 Load displaying	●	●	●
黑匣子功能 Black box function	●	●	●
后备电源应急楼呼供电 Back-up source supply power for emergency landing call	●	●	●
集成无线楼层呼叫系统 Wireless integrated landing call system	○	●	●
楼层语言播报 Landing broadcast	○	●	●
附件 accessories			

快装式外围栏 Quick-assembled outside enclosure	●	●	●
新型电缆卷筒 New cable drum	三选一 choose one from the three kinds (100m 以下建议配置电缆卷筒、100m 以上配置电缆滑车式) (choose cable drum for the height below 100m, while choose tackle for the height upper 100m)		
230 红旗滑车 (门槛高 度 680mm) 230 red flag tackle (height of doorsill is 680mm)			
500 红旗滑车 (门槛高 度 950mm) 500 red flag tackle (height of doorsill is 950mm)			
II 型 D 附墙(3m~3.6m) II-type D mast tie (3m~3.6m)	●	●	●
II 型 C 附墙 (3.4m~4.2m) II-type C mast tie (3.4m~4.2m)	○	○	○
涂装 Painting			
工程黄配色方案 Engineering yellow	●	●	●
中联红配色方案 Zoomlion red	○	○	○
极光绿 Laser green	○	○	○
电泳标节 Electrophoresis mast	●	○	○
热浸锌标节 Zinc immersion mast	○	●	●
定制服务 (配件选装) ordered serving (optional accessories)			

自动加油机 Automatic oiling machine	○	○	○
电动吊杆 Electric suspender	○	○	○
翻板出料门 Turnover discharge door	○	○	○
司机室推拉门 Sash door for cab	○	○	○
外围栏平推门 Horizontal sliding door for outside enclosure	○	○	○
司机室风扇 Fan for cab	○	○	○

说明：“●” 标配，“○” 选配，“-” 无该项配置；

Note：“●” standard configuration, “○” option configuration, “-” without configuration

整机工业设计方案：
 工程黄  中联红  极光绿
Project of industry design: Engineering yellow Zoomlion red Laser green

2. SC 系列施工升降机基础设置的选型

2. Selection of Concrete Foundation SC Construction Hoist

2.1 设置基础型号CM3038（适用于SC系列单笼不带司机室）

2.1 Model CM3038 (applicable to SC single-cage hoist without cab)

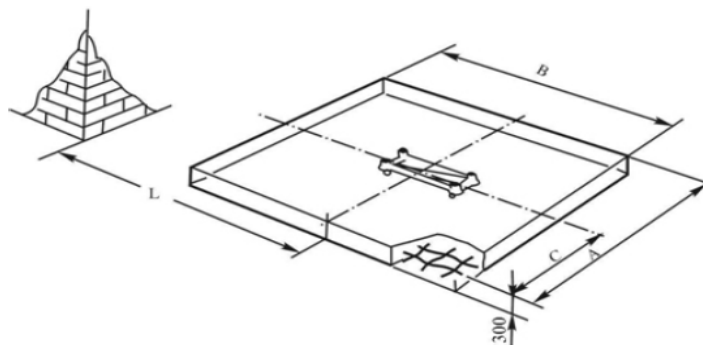


图 2.1 CM3038混凝土基础

Figure 2.1 CM3038 Concrete Foundation

表2.1 CM3038 混凝土基础详细尺寸

Table 2.1 Detailed Size of CM3038 Concrete Foundation

型号 Model	吊笼规格 Specification of Cage	基础离墙距离 Distance L between Foundation and Wall	A (mm)	B (mm)	C (mm)	
					左笼 Left Cage	右笼 Right Cage
SC100 series SC200 series	3.2×1.5m	I, IID, III,IV,V 型附墙架 I, IID, III ,IV and V-type mast tie:	3000	3800	2400	600

2.2 设置基础型号CM3838（适用于SC系列单笼带司机室）

2.2 Model CM3838 (applicable to SC single-cage hoist with cab)

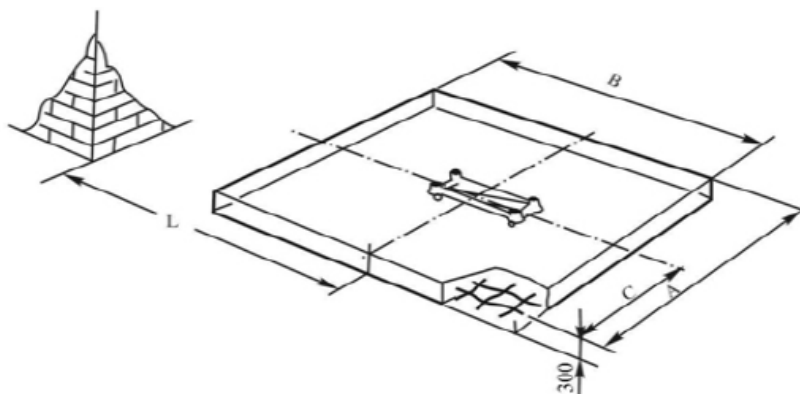


图 2.2 CM3838混凝土基础

Figure 2.2 CM3838 Concrete Foundation

表2.2 CM3838 混凝土基础详细尺寸

Table 2.2 Detailed Size of CM3838 Concrete Foundation

型号 Model	吊笼规格 Specification of Cage	基础离墙距 Distance L between Foundation and Wall	A (mm)	B (mm)	C (mm)	
					左笼 Left Cage	右笼 Right Cage
SC100 series SC200 series	3.2×1.5m	I, IID, III,IV,V型附 墙架 I, IID, III ,IV and V-type mast tie:	3800	3800	3200	600

2.3 设置基础型号CM4638（适用于SC系列双笼不带司机室）

2.3 Model CM4638 (applicable to double-cage hoist without cab)

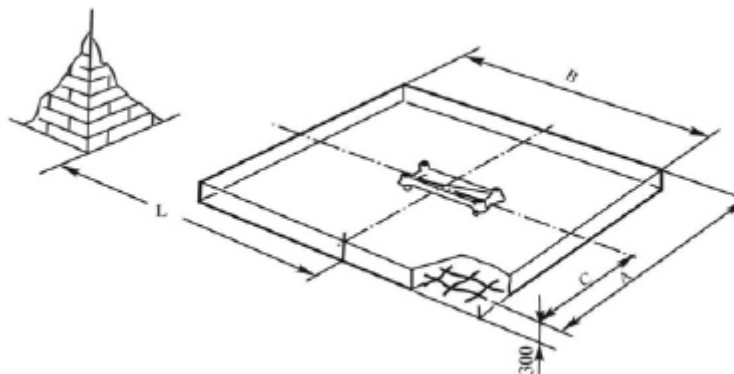


图 2.3 CM4638混凝土基础

Figure 2.3 CM4638 Concrete Foundation

表2.3 CM4638 混凝土基础详细尺寸

Table 2.3 Detailed Size of CM6238 Concrete Foundation

型号 Model	吊笼规格 Specification of Cage	基础离墙距离 Distance L between Foundation and Wall	A (mm)	B (mm)	C (mm)
SC100/100 series SC200/200 series	3.2×1.5m	I, IID, III,IV,V 型附墙架 I, IID, III ,IV and V-type mast tie:	4600	3800	2300

2.4 设置基础型号CM6238（适用于SC系列双笼带司机室）

2.4 Model CM6238 (applicable to SC double-cage hoist with cab)

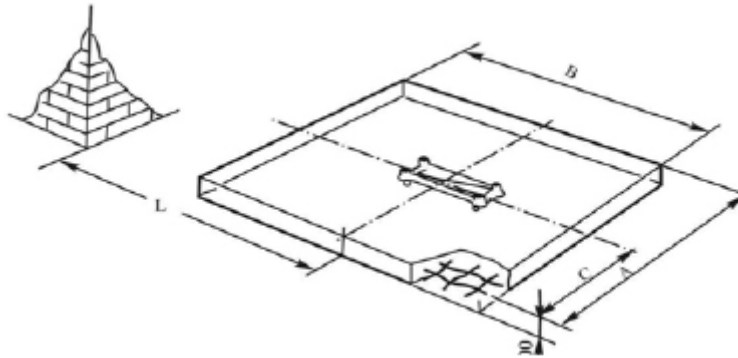


图 2.4 CM6238混凝土基础

Figure 2.4 CM6238 Concrete Foundation

表2.4 CM6238 混凝土基础详细尺寸

Table 2.4 Detailed Size of CM6238 Concrete Foundation

型号 Model	吊笼规格 Specification of Cage	基础离墙距离 Distance L between Foundation and Wall	A (mm)	B (mm)	C (mm)
SC100/100 series SC200/200 series	3.2×1.5m	I, IID, III,IV,V 型附墙架 I, IID, III ,IV and V-type mast tie:	6200	3800	3100

3. 标准节

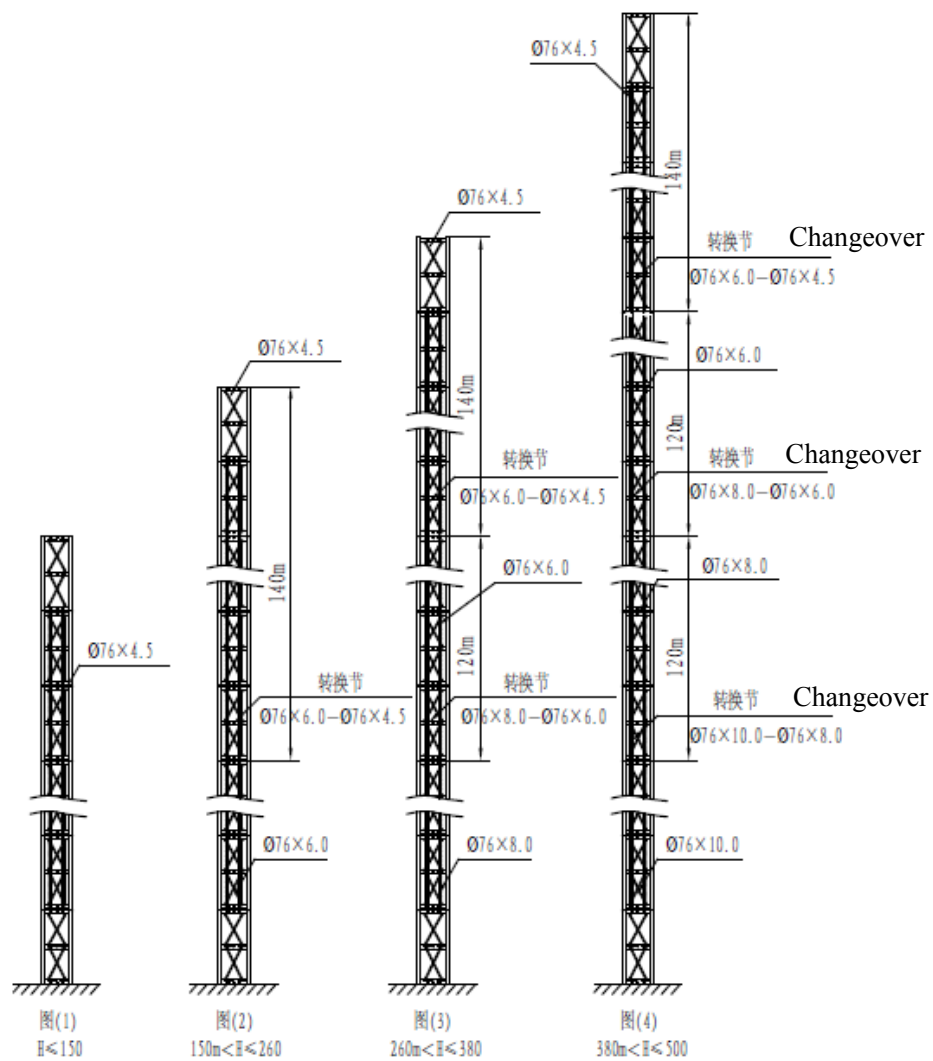
3. Mast

3.1 标准节配置

3.1 Configuration of Mast

升降机安装高度不同，标准节的配置也不同，标准节主弦管壁厚随着安装高度的增加而配置不同，在不同主弦管壁厚的标准节之间必须设置转换节。

For different installed height of hoist, the configuration of mast sections is also different. The thickness of main chord of mast section will vary as the installed height increases, and the changeover section shall be set up between the mast sections with different thickness of main chord.



注：H为导轨架安装高度

Note: H is the installed height of mast

图3.1 标准节立管壁厚配置

Figure 3.1 Thickness of Vertical Tube of Mast section

标准节规格选择示例:

Example for selection of specification of mast section:

导轨架的安装高度为500m时, 根据标准节立管壁厚配置图3.1, 可知:

When the installed height of mast is 500m, the thickness of mast section is indicated in Figure 2.1-3:

表3.1 不同安装高度时标准节的配置

Table 3.1 Erection of Mast sections for Different Installed Height

安装高度 Installed Height 安装数量 Installed Number 标准节规格 Specification of Mast section	150m	260m	380m	500m
Φ76×4.5mm	100	93 (含一节转换节) 93 (including one changeover section)	93 (含一节转换节) 93 (including one changeover section)	93 (含一节转换节) 93 (including one changeover section)
Φ76×6.0mm	0	80	80 (含一节转换节) 80 (including one changeover section)	80 (含一节转换节) 80 (including one changeover section)
Φ76×8.0mm	0	0	79	80 (含一节转换节) 80 (including one changeover section)
Φ76×10.0mm	0	0	0	79
Total number of mast sections	100	173	252	332

4. SC 系列施工升降机附墙架的选型

4. Selection of Mast tie for SC Industrial Hoist

目前SC系列施工升降机附墙架标配型号为II D型，以下型号附墙架为选配，如以下型号附墙架不满足使用要求，可根据用户要求及实际使用工况另行设计附墙架。

At present, the standard type of mast tie for SC series construction hoist is II D, and the others types are optional types. If these types of mast tie cannot be satisfied with the user's requirement, we can design new type according to the actual working condition and the user's requirement.

4.1 SC系列施工升降机附墙架的型号

4.1 Types of Mast tie of SC Construction Hoist

4.1.1 I 型附墙架

4.1.1 I-type Mast tie

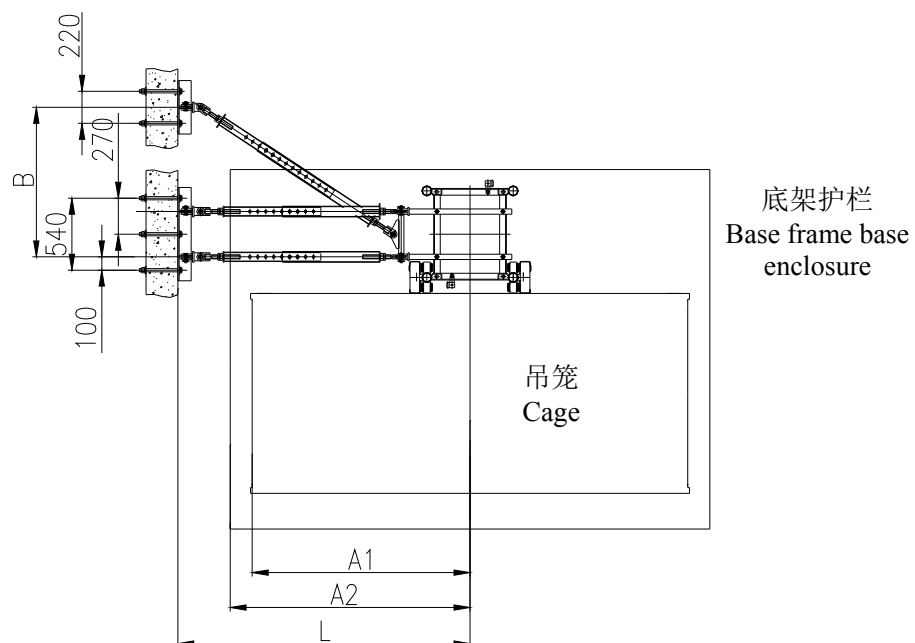


图4.1-1 I型附墙架示意图

Figure 4.1-1 Schematic Diagram for I-type Mast tie

主要用于：适用于附墙距离比较近，载重不大的单笼施工升降机

Applicability: Applicable to the single-cage construction hoist which is relatively close to wall and the carrying capacity is not high

表4.1-1 I型附墙架连接尺寸

Table 4.1-1 Connection Size of I-type Mast Tie

吊笼规格 Specification of Cage	L (mm)	A1 (mm)	A2 (mm)	B (mm)
3.2×1.5m	1800-2500	1650	1800	1000-1570
3.0×1.3m		1540	1700	1000-1570

4.1.2 II型附墙架（推荐使用IID型附墙架）

4.1.2 II-type Mast Tie (IID mast tie recommended)

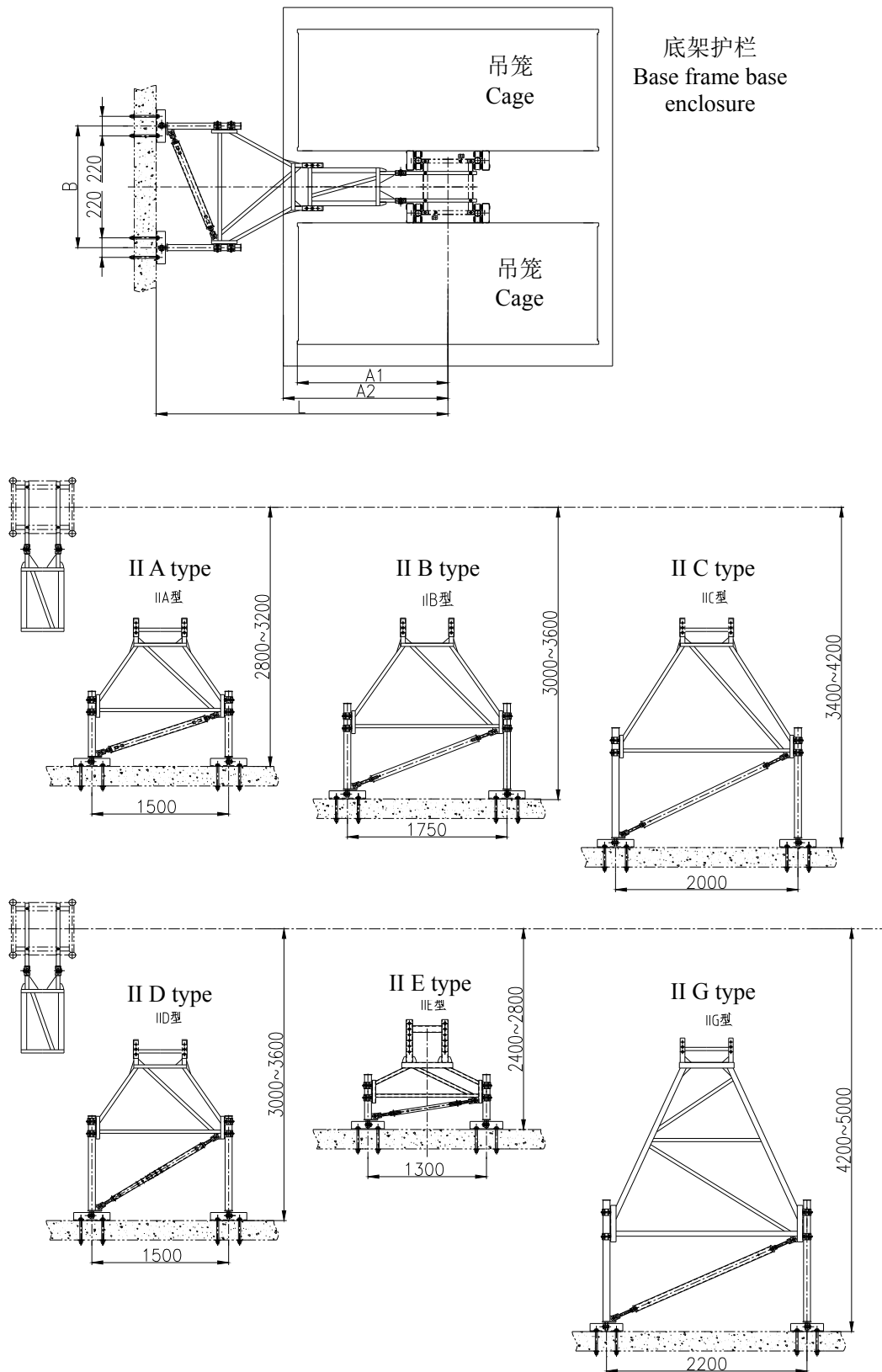


图4.1-2 II型附墙架示意图

Figure 4.1-2 Schematic Diagram for II-type Mast Tie

表 4.1-2 II 型附墙架连接尺寸

Table 4.1-2 Connection Size of II-type Mast Tie

吊笼规格 Specification of Cage	型号 Model	L (mm)	A1 (mm)	A2 (mm)	B (mm)
3.2×1.5m	IIA	2800-3200	1650	1800	1500
	IIB	3000-3600			1750
	IIC	3400-4200			2000
	IID	3000-3600			1500
	IIE	2400~2800			1300
	IIG	4200~5000			2200
3.0×1.3m	IIA	2800-3200	1540	1700	1500
	IIB	3000-3600			1750
	IIC	3400-4200			2000
	IID	3000-3600			1500
	IIE	2400~2800			1300
	IIG	4200~5000			2200

4.1.3 III型附墙架

4.1.3 III-type Mast Tie

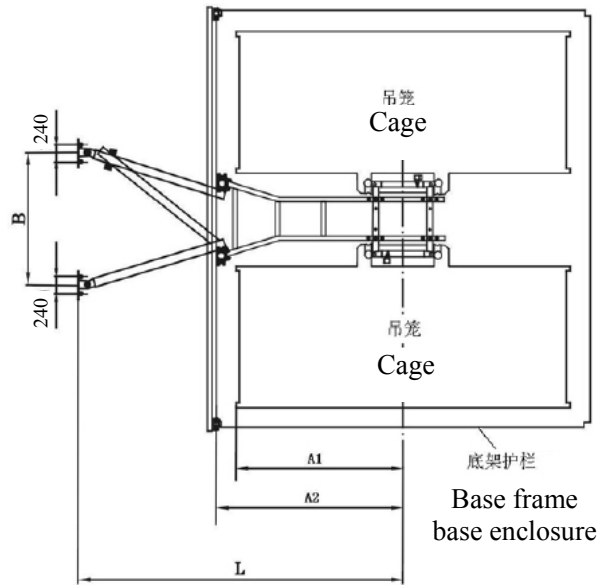


图4.1-3 III型附墙架示意图

Figure 4.1-3 Schematic Diagram for III-type Mast Tie

表4.1-3 III型附墙架连接尺寸

Table 4.1-3 Connection Size of III-type Mast Tie

吊笼规格 Specification of Cage	L (mm)	A1 (mm)	A2 (mm)	B (mm)
3.2×1.5m	3000-3600	1650	1850	1200-1600
3.0×1.3m	3000-3600	1540	1750	1200-1600

4.1.4 IV型附墙架

4.1.4 IV-type Mast Tie

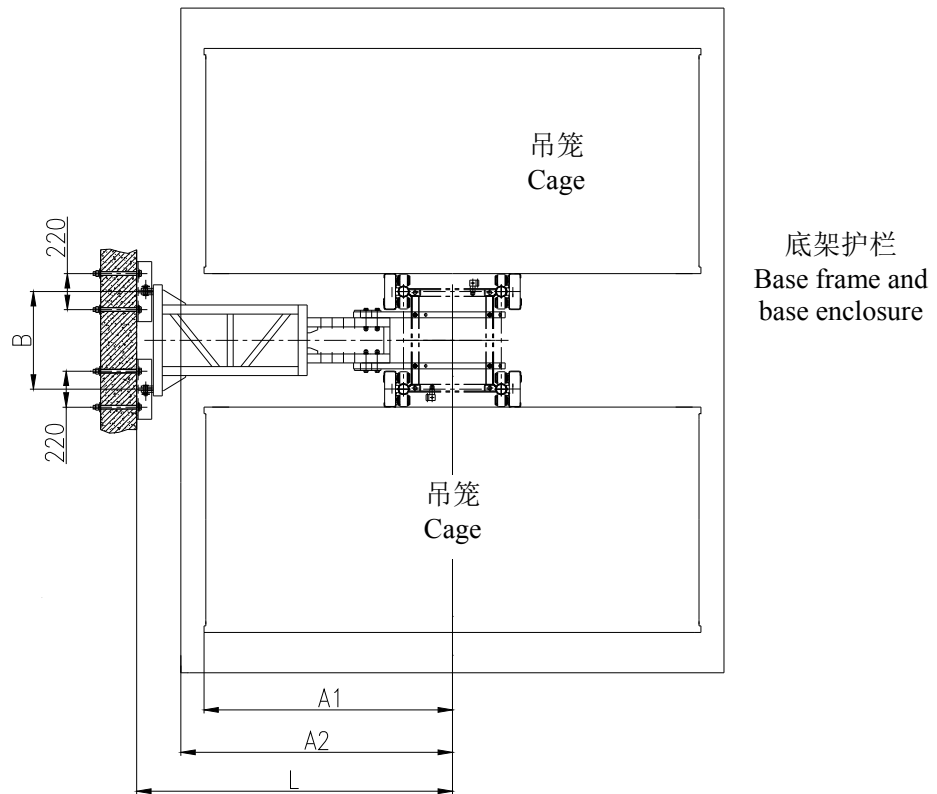


图4.1-4 IV型附墙架示意图

Figure 4.1-4 Schematic Diagram for IV-type Mast Tie

表4.1-4 IV型附墙架连接尺寸

Table 4.1-4 Connection Size of IV-type Mast Tie

吊笼规格 Specification of Cage	L (mm)	A1 (mm)	A2 (mm)	B (mm)
3.2×1.5m	1800-2100	1650	1800	650
3.0×1.3m	1800-2100	1540	1700	650

4.1.5 V型附墙架

4.1.5 V-type Mast Tie

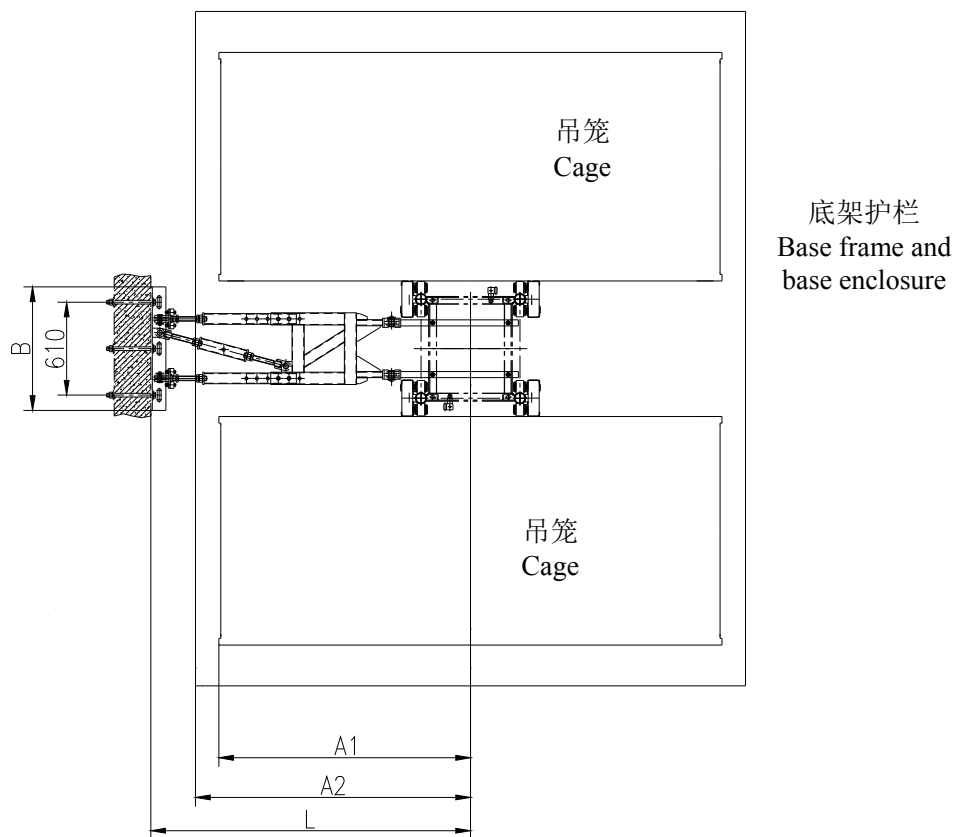


图4.1-5 V型附墙架示意图

Figure 4.1-5 Schematic Diagram for V-type Mast Tie

表4.1-5 V型附墙架连接尺寸

Table 4.1-5 Connection Size of V-type Mast Tie

吊笼规格 Specification of Cage	型号 Model	L (mm)	A1 (mm)	A2 (mm)	B (mm)
3.2×1.5m	VA	1800-2100	1650	1800	610
	VB	2100~2400			
3.0×1.3m	VA	1800-2100	1540	1700	610
	VB	2100~2400			

4.2 附墙架与墙的连接

4.2 Connection between Mast Tie and Wall

4.2.1 SC 系列施工升降机附墙架与墙的连接

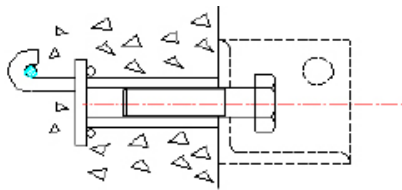
4.2.1 Connection between Wall and Mast Tie of SC Construction Hoist

附墙架与墙的连接有以下几种方式:

The connection between mast tie and wall can be realized in the following manners:

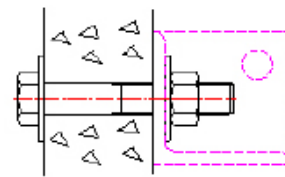
[例1] 与墙上预埋件相连接

[Example 1] Connected with embedded part in wall



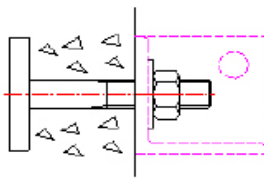
[例2] 用穿墙螺栓固定

[Example 2] Fixed with wall-penetrating bolt



[例3] 预埋螺栓

[Example 3] Embedded bolt



[例4] 与钢结构焊接

[Example 4] Welded onto steel structure

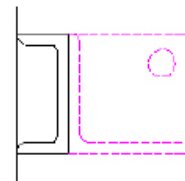


图4.3-1 SC100及SC200施工升降机附墙架与墙的连接方式

Figure 4.3-1 Mode of Connection between Wall and Mast tie of SC100 and SC200 Construction Hoists